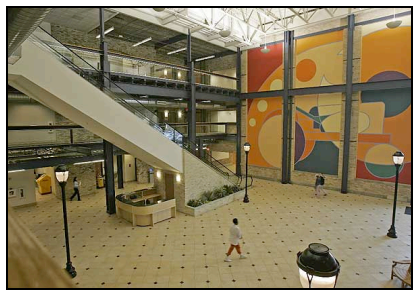


# I.D.C.W. - Interior Design Coalition of Wisconsin

Presents .6 CEU's (pending) Thursday, October 27, 2011 8:30 AM - 5:00 PM



## Course Title:

***"Code Commentary and Intelligent Illumination"***

**Subject matter:** Health, Safety, Welfare, Codes & Standards, Materials, Interior Environments, Sustainable Design, Lighting

**Location:** **Summit Place - Office Complex - West Allis, WI**

Home of Brookdale Senior Living and other businesses

Corporate Conference Center is the CEU event Location

First Floor next to Rupena's Summit Café

ph.414.475.2500

**6737 West Washington Street. West Allis, WI 53214**

**Directions: From West** take I-94 East to 68th-70th St. **Exit # 307A** / Turn Right onto 70th St. go about 5 blocks South / turn Left on Washington St.

**From East** Take I-94 West to the 68th-70th St. **Exit # 307A** / Turn Left at 2nd Stop Light onto 70th St. / go about 5 blocks South / turn Left on Washington St.

Summit Place is visible on your left, just past Poblocki Sign Company

**Parking:** free all day on surface lot just West of Summit Place Building

**Instructors: Codes: James B Smith (.2 ceu pending) Lighting: Steve Klein (.4 ceu pending)**

**James B. Smith**, is a Prof. Engineer registered in the State of Wisconsin and recently appointed as Chief Building Inspector & Zoning Administrator for City of Waukesha. Smith was a 'State of Wisc. Safety & Buildings Division' employee from 1979 to August 2011. He began there as plan examiner and became plan review leader with primary responsibility for healthcare and detention facilities in 1984. Smith soon became Program Manager for the Commercial Building Program and was later put in charge of the Division's Building Material Evaluation operation. Smith has served on many committees including 'Means of Egress' and 'Fire Safety' as well as Code Development Committees for the IBC (International Building Code). This valuable course will provide overview and understanding of current codes, standards and guidelines for interiors. Specific requirements for accessibility, egress and interior finishes will be covered. Wisconsin state building codes and adoption of model codes for existing and historical buildings will also be discussed.

**Steven L. Klein**, a professional member of the International Association of Lighting Designers (IALD), the Illuminating Engineering Society of North America (IESNA), and National Council on Qualifications for Lighting Professions (NCQLP). Klein is a very entertaining speaker on topics related to Architectural Lighting Design, Theory, Practice and Education. He's a member of the ASID Distinguished Speaker Series. Klein has designed with light since 1978 and has been principal designer at Klein Lighting, LLC since 1998. He has exceptional knowledge in the areas of human physiological relationship with light, the science & technical aspects of light, as well as creative manipulation of light. He designs illumination solutions for projects found nationwide and has been published in dozens of trade periodicals and books. Klein is part of the ASID Distinguished Speaker Series. He teaches and lectures nationally. Commercial and residential designers will both learn how the lighting industry is changing. New lighting information, government regulations, performance standards, technology for lamps (including LED) will be presented. Find out which products are excellent choices and why. Lighting has never been more fun.

## n CEU Program / Schedule (there will be additional breaks)

8:30 AM - Arrival/Registration	2:15 PM - 2:30 PM Break
9:00 AM - Intro/IDCW Messages	2:30 PM - 4:30 PM Speaker/CEU (.2 credits)
9:30 AM - 11:30 AM Speaker/CEU (.2 credits)	4:30 PM - <u>Required</u> CEU Forms and Evaluations
11:30 AM - 12:15 PM Lunch / Mini trade show	must be completed + optional networking
12:15 PM - 2:15 PM Speaker/CEU (.2 credits)	5:30 PM - Departure

**This event will be interesting & informative for designers, students, architects and other professionals!**

